

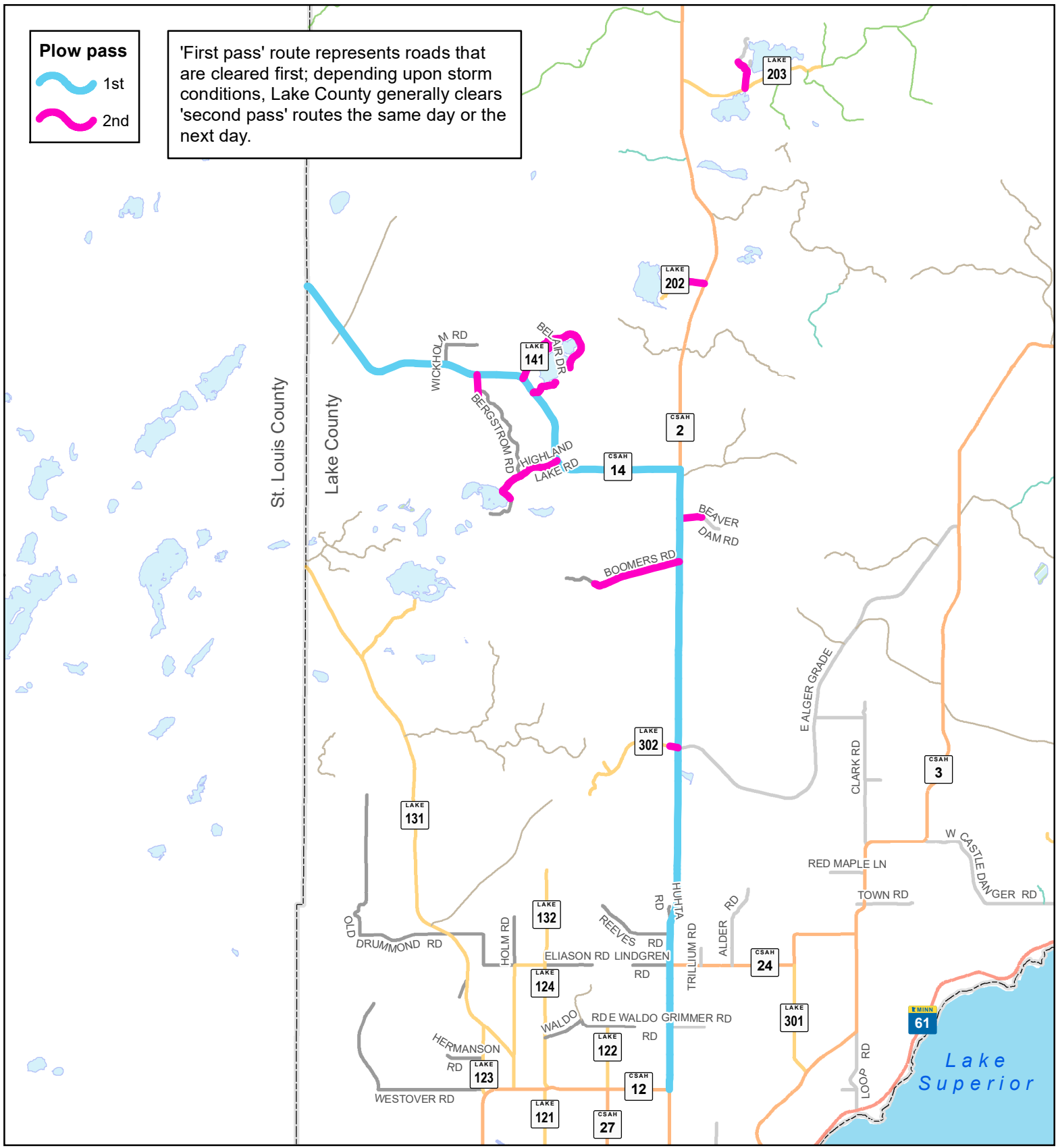


**Plow pass**

 1st

 2nd

'First pass' route represents roads that are cleared first; depending upon storm conditions, Lake County generally clears 'second pass' routes the same day or the next day.



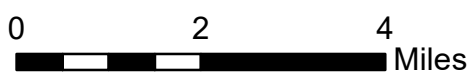
Author  
Lake County, 1/25/2017

Data Source  
Lake County, MN; Google

Disclaimer  
Map and/or data is public domain in accordance with Section 466.03, subdivision 21 of Minnesota State Statute.

Map and/or data not appropriate for use in establishment of property boundaries, in property descriptions, or for any legal purposes; not appropriate for navigation; not for use by third parties.

Lake County, MN makes no representation or warranties, expressed or implied, with respect to the use or reuse of the map and/or data provided herewith, regardless of format or the means of transmission. Map and/or data provided "as is" with no guarantee or representation of accuracy, currency, suitability, performance, merchantability, reliability, or fitness for any particular purpose. Lake County, MN shall not be liable for any direct, indirect, special, incidental, compensatory, or consequential damages or third party claims that result from the use of this map and/or data, even if Lake County, MN has been advised of the possibility of potential loss or damage. This map and/or data may not be used in states that do not allow this exclusion or limitation of incidental or consequential damages.



1 inch = 11,000 feet  
1:132,000

**Lake County Plow Routes - WALES**

Plow origin: TWO HARBORS  
Superintendent desk: (218) 834-8380  
Routes are subject to change without notice.




**STAYBACK STAYALIVE**

\*Stay Back Stay Alive\* graphic courtesy of MN Department of Transportation, 2016